

NRHI Member Roles in Practice Transformation

NRHI and its members are involved in initiatives funded by CMS and CMMI to support clinician participation in the Quality Payment Program (QPP) — a Medicare performance-based program started in 2017 to implement regulations enacted by MACRA.



MACRA The Medicare Access and CHIP Reauthorization Act of 2015 (MACRA) was passed by Congress to improve care for Medicare patients by shifting the payment system from volume to value.

Center for Medicare Services (CMS)

Center for Medicare & Medicaid Innovation (CMMI)

Quality Payment Program (QPP)

TCPI Transforming Clinical Practice Initiative

The four-year Transforming Clinical Practice Initiative (TCPI) is supporting more than 140,000 clinicians as they work to improve quality of care, increase patients' access to information, and spend dollars

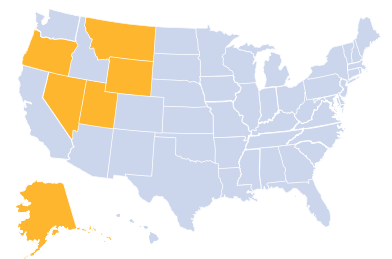
more wisely. TCPI provides resources and technical assistance needed to help practices transition to the value-based payment models required under MACRA.

QPP SURS

Small, Underserved, & Rural Support

The QPP-SURS program was established under MACRA to enable local, experienced organizations to help individual Merit-based Incentive Payment System (MIPS)-eligible clinicians and small practices satisfy MIPS requirements.

NRHI, in partnership with three member RHICs, is one of 11 organizations chosen by CMS to provide technical assistance and support to eligible individual or small group practices during the transition from fee-for-service to value-based payment models. The practices, defined as typically having 15 or fewer clinicians, are located in Oregon, Nevada, Utah, Alaska, Wyoming, and Montana.



RHICs Involved with QPP SURS



SAN

10 Support and Alignment Networks

Support and Alignment Networks (SAN) include national and regional professional associations and public-private partnerships with expertise in practice transformation. SANs provide PTNs with tools such as evidence-based learning, continuing medical education, and direct technical assistance to support their transformation efforts.



High-Value Care Support and Alignment Network

PTN

29 Practice Transformation Networks

Practice Transformation Networks (PTN) facilitate peer-based learning, including coaching and mentoring, to help clinicians develop core competencies specific to practice transformation. This approach actively engages clinician practices in the transformation process and ensures collaboration among a broad community of healthcare professionals.

The Network for Regional Healthcare Improvement (NRHI) is one of 10 SANs designated by CMMI. The NRHI High-Value Care SAN leverages the experiences of its member regional health improvement collaboratives (RHIC) to provide tools and resources that support TCPI's five phases of practice transformation. RHICs have highly relevant and applicable expertise from their roles as QIN-QIOs, SIM awardees, CPC+ awardees, APCDs, etc. They offer real world insights to the PTNs in their regions, and provide recruitment support and help framing local issues. In addition, through their participation in TCPI, NRHI SAN faculty partners gain in-depth knowledge of CMS's programs, resources, and requirements, which can be applied to regional efforts.

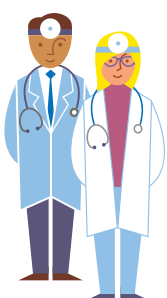
SAN Faculty Members



RHICs That Lead PTNs



Local Practices & Clinicians



Benefits to Clinicians

Participation in practice transformation initiatives can position teams for success in value-based payment environments, and prepare them to take advantage of emerging opportunities (e.g., partnerships, coordinated care, integrated services, and incentive programs). Participation helps providers navigate the changing healthcare landscape and requirements of QPP, while keeping their main focus on the needs of their patients.

- Opportunities for continuous quality improvement
- Optimized use of Health Information Technology
- Options to join an Advanced Alternative Payment Model (APM) and assistance with completion of transition
- Improved relationships with patients and their families
- Reduced healthcare costs, unnecessary tests, and hospitalizations
- Improved patient health outcomes