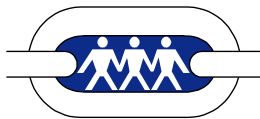


Urban Health Challenges: Innovative Approaches in Southeast Michigan

*Presented by Lisa Mason
Greater Detroit Area Health Council
August 8, 2014*



Agenda

- Overview and Background
- Poverty and Health
- Innovative Solutions
- Q & A



Urban Health Challenges

- **Poverty:**
 - One in three Detroit residents (*Detroit Free Press*)
 - 46% children in Detroit (*Annie E. Casey Foundation*)
- **Bankruptcy:** largest municipality to file for bankruptcy
- **Unemployment, loss of manufacturing jobs:** “Big” three autos
- **Population loss:** from peak of 1.86M in 1950 to 700,000 in 2012 (*Forbes*)
- **Literacy:** 47% Metro Detroiters functionally illiterate (*Detroit Literacy.org*)
- **Housing blight:** recommend removing 20% housing stock (*BRTF*)
- **High rates chronic disease/poor health:**
 - Infant Mortality: 14.7 per 1,000 live births (*www.michigan.gov*)
 - Hypertension: 32.2-41.8% of population (*Detroit region, BRFSS*)
 - Diabetes: 10% (MI rate, *BRFSS*)
 - Mortality: 1,055.8 per 100,000 vs 784.6 in MI (*MDCH*)



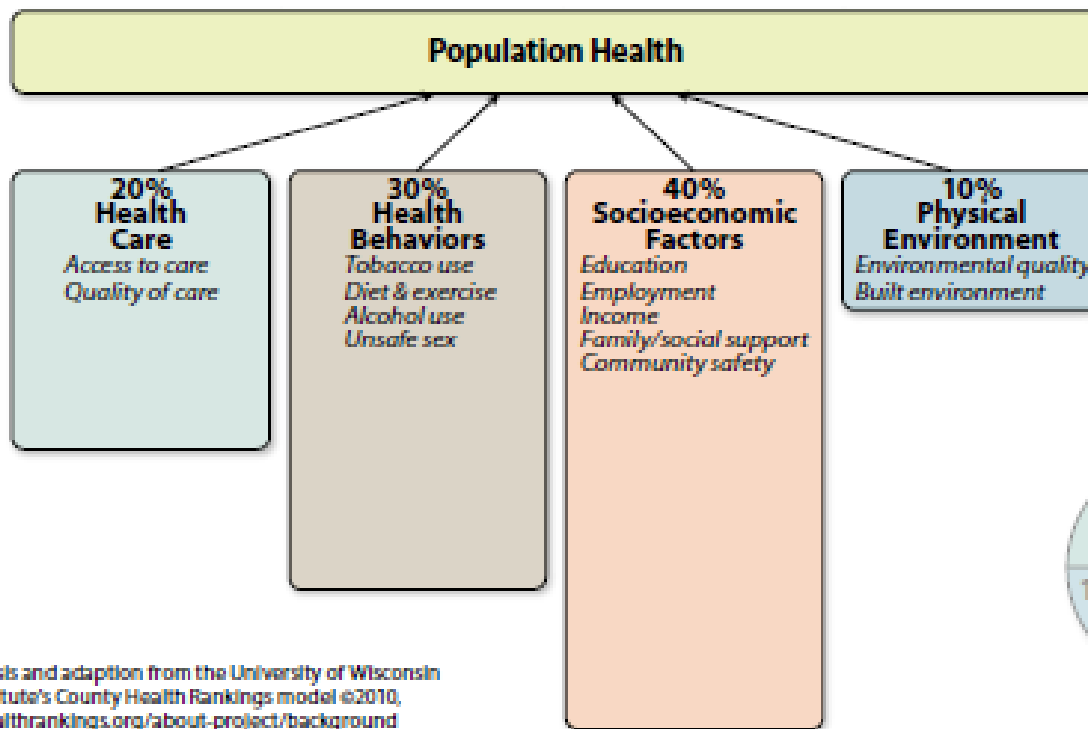
Impact of Poverty

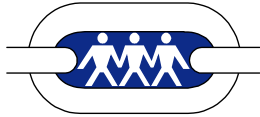
- #1 factor affecting health (*Newsflash*)
- Impedes Cognitive Function (*Science*)
 - Correlation between poverty and counterproductive behavior
 - Facts about those who are poor:
 - Use less preventive health care
 - Fail to adhere to drug regimens
 - Are less productive workers
 - Less attentive parents
 - Worse managers of their finances
- Takes away 8 years of healthy life (*Newsflash*)
- Negative impact on brain development (*Brain World Magazine*)
- Increased rates of chronic disease (*Alyssa Brown, Gallup*)



Social Determinants of Health

Figure 1: Social Determinants of Health





Innovative Solutions in Southeast MI

- *Find MI Care*

Website and Smartphone app

- Transitions to Success Program

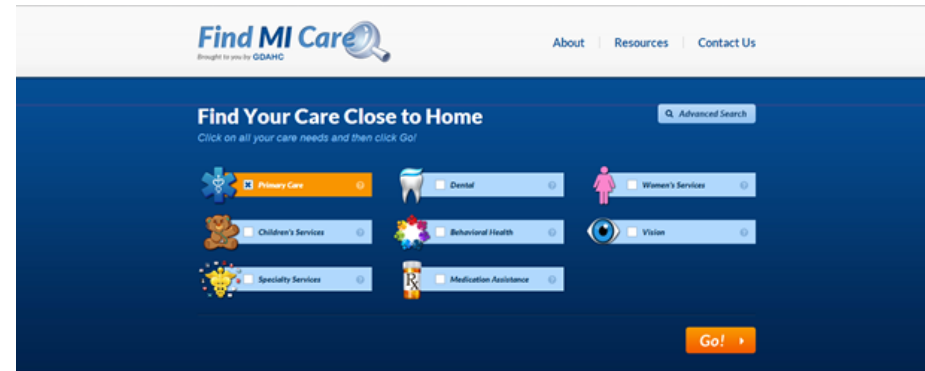
Holistic model of care

Matrix Human Services of Detroit

Dr. Marcella Wilson

Find MI Care.org

- Connects individuals to low cost clinics
- ED staff, discharge planners redirect care to more effective setting
- Future Development
 - Find MI Transportation
 - Find MI Housing
 - Find MI Legal Aid





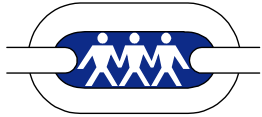
Matrix Transition To Success Model

View Poverty as treatable condition

- Caused by environmental factors
- Damaging mental and physical health outcomes

Health Care versus Human Services

- Diabetes: research → standards of care → treatment
- Lead poisoning, asthma, black lung disease:
 - Environmental causes
 - Research → standards of care → treatment
- Poverty
 - Environmental causes
 - Research → ?



Matrix Transition To Success Model, cont'd

- Transitions clients from dependency to self-sufficiency
 - Identified 18 self-sufficiency domains
 - Integrates and maximizes already-funded services
 - Pursue behavioral goals
- Created standards of care using evidence-based practices
 - Care management
 - Peer mentoring
 - Volunteerism
 - Financial literacy
- Work with clients to develop a “Map of My Dreams”
 - Addresses immediate basic needs
 - Plots long term goals leading to financial stability and improved health



Matrix Transition To Success Model, cont'd

Outcomes

- Immunizations up-to-date on 99% of 1369 Head Start children
- 100 car loans awarded for total value of \$547,000 with 98% successful repayment rate *(2012-2013)*
- 60% (56 of 93) clients surveyed had 40 to 76 point increase in credit scores
- 49% (46 of 93) clients surveyed had up to 63% increase in household income
- Prison recidivism rate 7% compared to national rate of 43.3% *(three year study, 216 returning citizens received TTS services)*



Matrix Transition To Success Model, cont'd

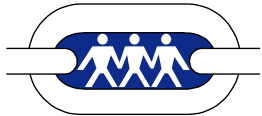
GDAHC partnership

- MI SIM grant application
- National Strategy Council membership
- Train-the-Trainer

[Watch video on YouTube](#)



A look inside the 'Transition to Success' program



Thank You!

